

## DWDM System

### WDM System Series

WDM system is the high speed, large capacity equipment developed by HLin, the transmission channel up to 48 channels, and the single channel maximum speed rate is 10Gbit/s, total capacity up to 480Gbit, which can meet the requirement of ultra-large capacity and ultra long transmission distance. It is the best way to solve problem of fiber cable resource shortage.

### DWDM System

The framework of HLin DWDM is 2U+1U, modular design, convenient expansion. The equipment has rich business interfaces, flexible configuration, economic network and reliable operation, which can meet the requirement of large business transmission and convergence of MAN.

### 2U DWDM



### Features

- Large capacity. Transmission rate per channel up to 10Gbit/s. Total capacity up to 480Gbit/s. C+L band up to 1600G.
- Flexible network. It can make the network of point to point, point to multi-point, chain network and ring network.
- Flexible and transparent access for various rates and services including Ethernet, PDH, SDH, and CATV and etc.
- Long distance transportation from 10KM to 120KM.
- 1+1 optical multiplexer section protection, fiber path rearrangement time  $\leq 30\text{ms}$ , ensure the safety of route.
- Open system structure, supports equipments from many suppliers.
- Flexible network management configuration based on SNMP. CLI, WEB and TELNET optional.
- 1+1 power supply backup system. Hot plugging for duplicate power supply is supported. DC or AC optional.

Address: A #, Jinshun Building, Ruyi Road, Longgang, Shenzhen, CHINA

Page 1 of 4

TEL: 86-755-8961736 FAX: 86-755-28961736

[Http://www.he-link.com](http://www.he-link.com)

[sales@he-link.com](mailto:sales@he-link.com)

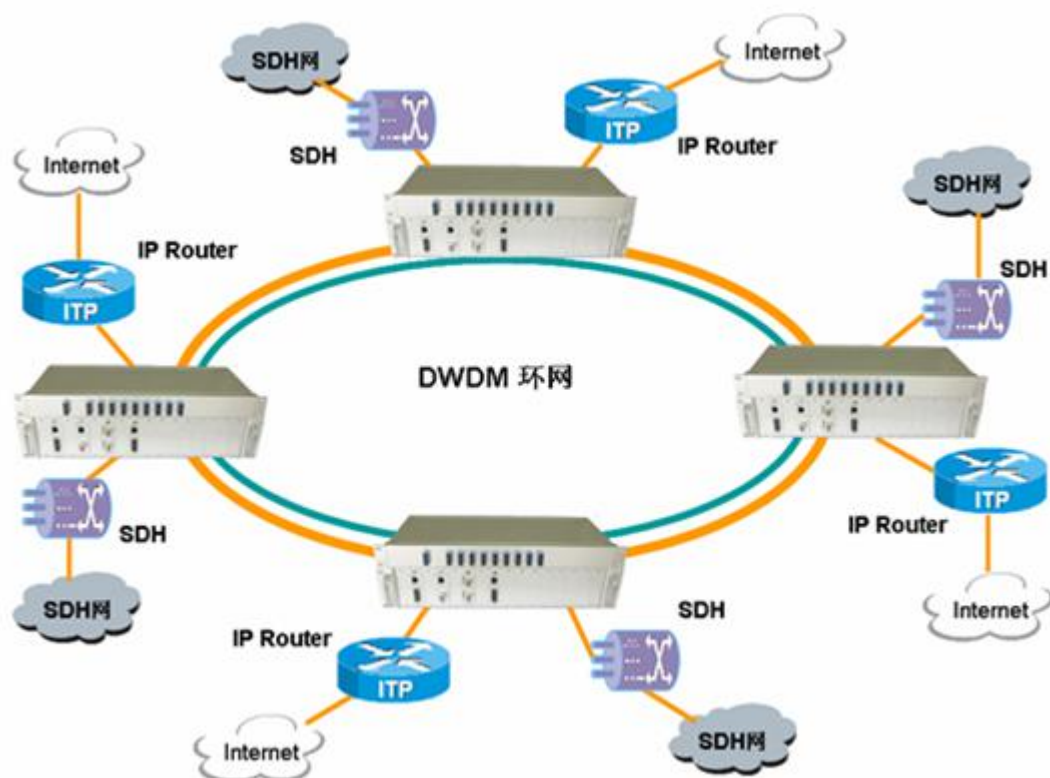
## Applications

- Line Monitoring
- WDM Network
- Telecommunication
- Cellular Application
- Fiber Optical amplifier
- Access Network

## Technical parameters

System Parameters		Technical Index
Maximum system capacity		16channel / 32channel / 40channel / 48channel x10G
Wavelength range		Comply with the ITU-T G.694.1 standard
Service Access Types		PDH, ATM, SDH(STM-1~STM-64)O -192/~OC-3 FE, GE, 10GE, FICON/ESCON/FIBER Channel/CATV
Optical interface transmission		3R transmission, each channel rate supports 125Mbps~10Gbps (Optional)
Physical network topology		Point to point, Point to multi-points, Chain, Ring, BIDI
Fiber Type		G.652 G.653 G.655
Management System		CLI /TELNET/SNMP/WEB
Product Size	2U OTU	25(W)×88(H)×116(D) (mm)
	1U Rackmount	440(W)×44(H)×230(D) (mm)
	2U Rackmount	428(W)×88(H)×322(D) (mm)
Environmental Requirement	Operating Temperature	-10℃ ~ 60℃
	Storage Temperature	-40℃ ~ 80℃
	Relative humidity	5% ~ 95%
Power Supply Requirements(Standard)		220 V/AC, 50Hz, -48 V/DC(Optional)
Safety and EMC		In line with the FCC, UL, CE, TUV, CSA standards
Power Consumption		10G, ≤ 60W

## Typical application



It is the solution of core network. DWDM can achieve the multiple logical ring superposition of SDH, IP and video etc. business by one fiber ring. Each ring bears one business, and they are noninterference. Establishing network by DWDM physical ring connection can save a lot of fiber resource, especially for the situation of many accessing points. This network solution has the very obvious advantage over cost.

## Ordering information

### DWDM System

HL1000D	X	XX	X	X	X
Passive Part	System Type	Number of Channel	Transmission Type	Management System	Power Supply
	2 = 2U+1U	04=4 channel 08=8 channel 16=16 channel 40=40 channel 48=48 channel XX=Customize	1=Dual fiber Bidirectional 2=Single fiber Bidirectional 3=Single fiber Single direction X=Customize	1=With Management 2=No Management	1=dual AC 2=dual DC 3=AC+DC

## DWDM business card

### 2U OTU card

HL_OTU	X	X	X	XX	CXX
Active Part	Speed Ratio	Transmission Distance	Wavelength Reshaping	Client Interface	First Wavelength
	0 = 155M 1 = 1.25G 2 = 2.5G 3 = 10G X = Customize	1=40KM 2=60KM 3=80KM 4=100KM 5=120KM	1R= Without Wavelength Reshaping (Standard) 3R= With Wavelength Reshaping	S=Single-mode LC M=Multi-mode LC X = Customize	CXX=Customize C 2 1 = C 2 1 (C21 ~C60)